



# VesselsValue

---

INTRODUCTION

A Veson Nautical Solution

[vesselsvalue.com](https://vesselsvalue.com)

# About Us

Since our launch in 2011 we have been committed to providing transparent, validated Maritime data intelligence.

In 2023, VesselsValue became part of Veson Nautical, a technology leader that delivers maritime freight management solutions that propel the global shipping economy.



Trusted by buyers and sellers of bulk marine freight in every region of the world, Veson solutions are responsible for managing **\$109 billion** in freight traded and moving **4.4 billion** metric tons in annual trade each year.

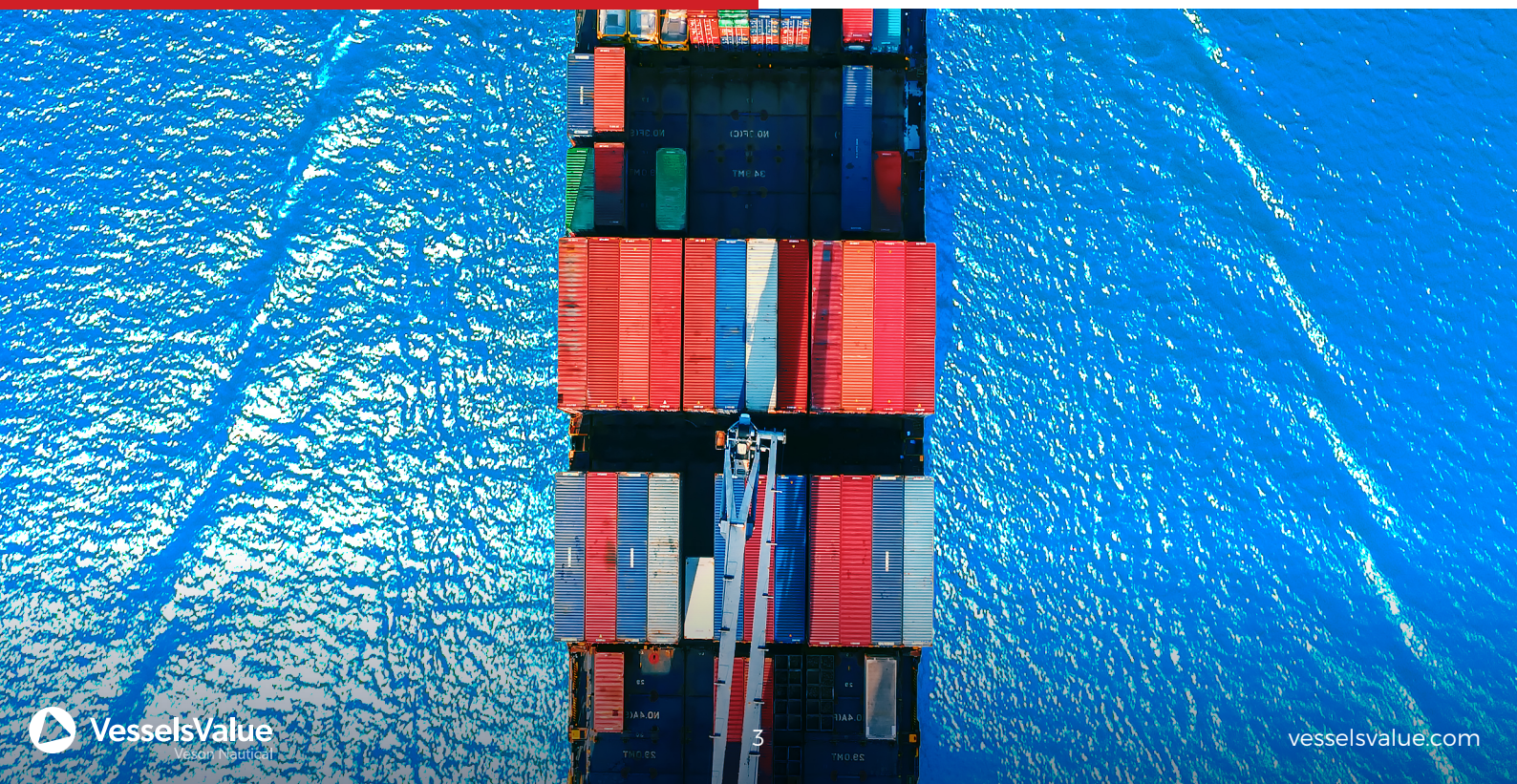
Learn more at **[veson.com](https://veson.com)**.





We cover over  
**77,000**  
individual  
assets

- Bulkers
- Tankers
- Containers
- Offshore
- LNG & LPG
- Small Tankers
- Small Dry
- Reefers
- RoRos
- Vehicle Carriers
- Specialised Cargo
- Floater Wet
- Passenger





# Our Services



## Value

We know how volatile and unpredictable the Maritime market can be. That's why our values are updated daily, driven by algorithms and leverage the latest market transactions, negotiations and intelligence.



## Database

Our comprehensive technical and commercial databases contain extensive information for over 77,000 vessels, 15,000 companies and 100,000 transactions. See the transactions live as they happen, search and compare specifications of individual vessels and build your own queries.



## Green

Our Green product range includes tools for monitoring the Energy Efficiency of vessels and their compliance with International Maritime Organization (IMO) regulations. You can search vessels by Green specifications, monitor Offshore and Renewable projects, and track vessel activity in Emission Control Areas.

**Energy Efficiency ratings include:** Energy Efficiency Design Index (EEDI), Energy Efficiency Existing Ship Index (EEXI), and Carbon Intensity Indicator (CII).

## A snapshot of our clients







## Values

Daily updated current and historical values for vessels, company fleets and portfolios.

View and compare across 5 different asset values:

### Market

What a vessel can be bought or sold for in the market.

### Forecast

Predictions of the future market values of a vessel until the end of its economic life.

### DCF

The estimated long term value of a vessel calculated as the discounted cash flow of its projected revenues and costs.

### Newbuilding

The cost to replace a vessel with a newbuild ship of equivalent specifications.

### Demolition

What a vessel can be sold for in the scrap market.



## Databases

**Vessel specifications** – up to 200 data fields covering the global shipping fleet. Including basic fields such as deadweight, delivery date and shipyard up to premium fields for example scrubber fitting date, BWTS type and design type.

**Commercial transactions** – current and historical charter and asset transactions for the global shipping fleet going back to 1993. Covering both spot and period charters and newbuild, secondhand and demolition transactions. A fully validated data set including fixture date, delivery date, charterer, rate and terms.

**Ownership** – current and historical ownership for the global shipping fleet. Fields include Beneficial Owner, Registered Owner, Operator, Commercial Manager, Commercial Controller, Technical Manager and ISM Manager.

**ESG** – estimated EEXI/EEDI ratings, carbon dioxide emissions, and CII ratings at vessel level for the global shipping fleet. Emissions and CII ratings are estimated from AIS movement data and engine specification data. Our in-house fuel consumption and emissions model is based on IMO GHG Study methodologies and validated against EU-MRV reported data



# Green

Our Energy Efficiency services combine VV's extensive Shipping data with the International Maritime Organization (IMO) framework to estimate Energy Efficiency ratings for individual vessels.

We offer two product packages:

## EEDI / EEXI

Ratings include **Energy Efficiency Design Index (EEDI)** and **Energy Efficiency Existing Ship Index (EEXI)** for Bulk, Tankers, Reefers and Containers.

## CII

Ratings include **Carbon Intensity Indicator (CII)** for Bulk, Tankers, Reefers, Container, Cruise, Gas, Vehicle Carriers, Small Dry and Small Tankers.

With Green you can:

- Obtain rapid estimations of Energy Efficiency ratings
- Monitor vessel and fleet compliance
- View, search and compare ratings at a vessel and fleet level
- Access data driven results in real time
- Export vessel ratings and additional details

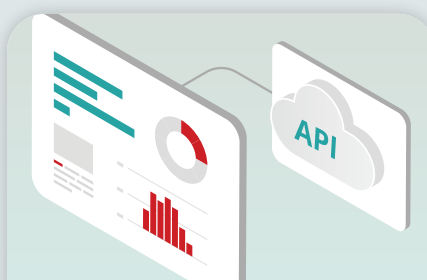
## Data delivered

### ONLINE ACCESS



Get online access to the VV platform with a subscription for you and your team.

### API DATA FEEDS



Designed to work seamlessly with your existing systems or applications, our data can be delivered through an API feed.

### REPORTS



Choose from a selection of ready made reports or get in touch to discuss your requirements for a bespoke report.